

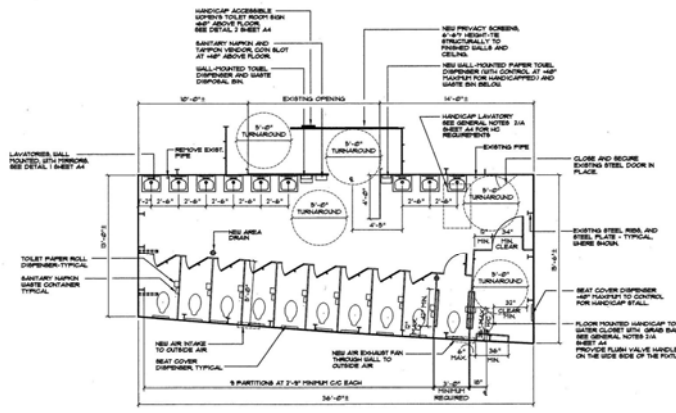
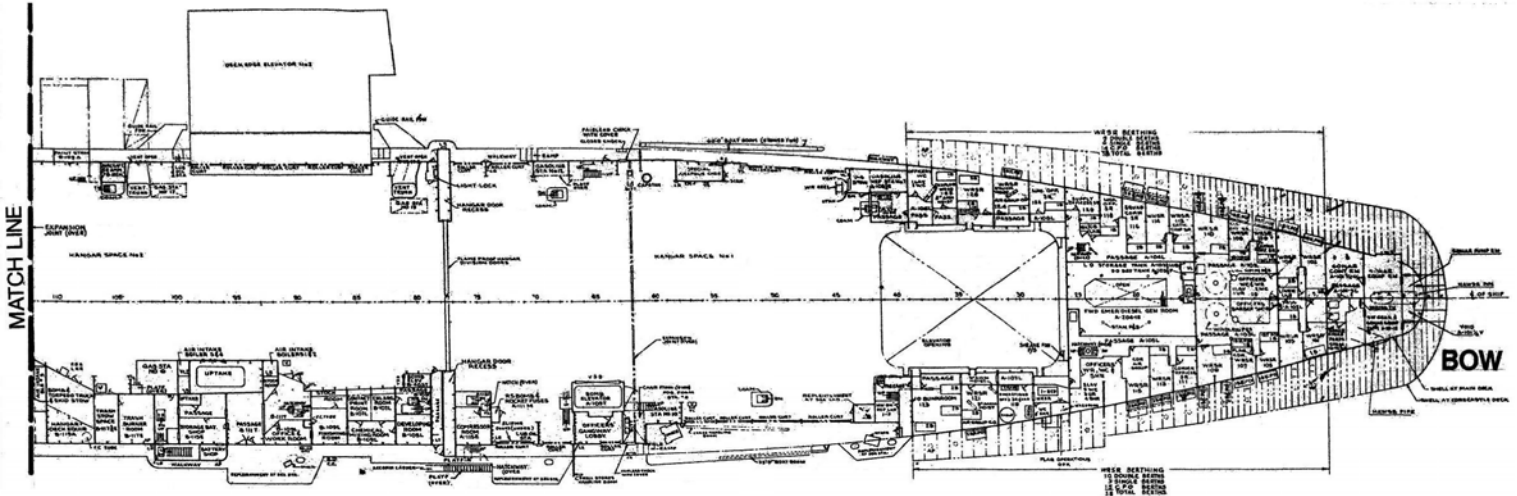


ARCHITECTURAL
NETWORK INC.

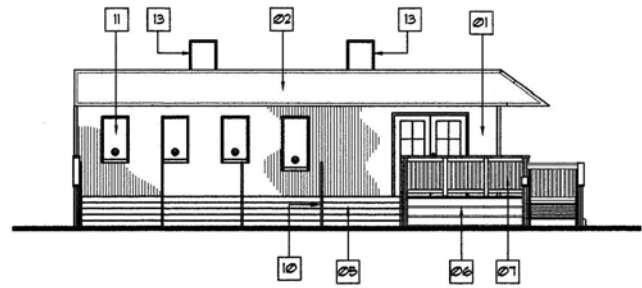
U.S.S. HORNET

Alameda, CA

U.S.S. HORNET AIRCRAFT CARRIER HISTORIC MUSEUM



FLOOR PLAN - AREA B'
NEW HANDICAPPED ACCESSIBLE WOMEN'S REST ROOM
SCALE: 1/8"=1'-0"



EAST ELEVATION

SCALE: 1/8"=1'-0"

SUMMARY

Architectural Network Inc. provided Architectural Services to the Aircraft Carrier Hornet Foundation for this unique project. The now decommissioned U.S.S. Hornet participated in World War II and the Apollo 11 manned space mission. It is moored at Alameda Point on the San Francisco Bay.

A.N.I. provided design services for a new gift shop, dockside restaurant, and onboard restaurant and restrooms. For a vessel that was originally intended for military and not civilian use (aside from being constructed in the 1940's), preservation of the U.S.S. Hornet's existing structure and identity as well as the introduction of disabled accessible features were critical aspects of this project.

ARCHITECTURE ■ SPACE PLANNING ■ INTERIOR DESIGN

700 Ygnacio Valley Road, Suite 270, Walnut Creek, CA 94596

VOICE: 925-934-2600 FAX: 925-934-5772 EMAIL: staff@architecturalnetwork.com WEBSITE: www.architecturalnetwork.com